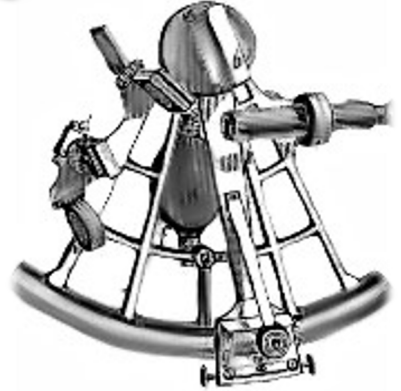


The Navigator

August 2021



Some Thoughts on Model Contests and Judging



Challenges * Solutions * Passion * Commitment

OUR MONTHLY MEETING SPOT

Meeting:

Jordan Ford
13010 N Interstate 35, San Antonio,
TX 78233

Date: Thursday,
August 5, 2021

Time: 6:30 PM – 8:00 PM

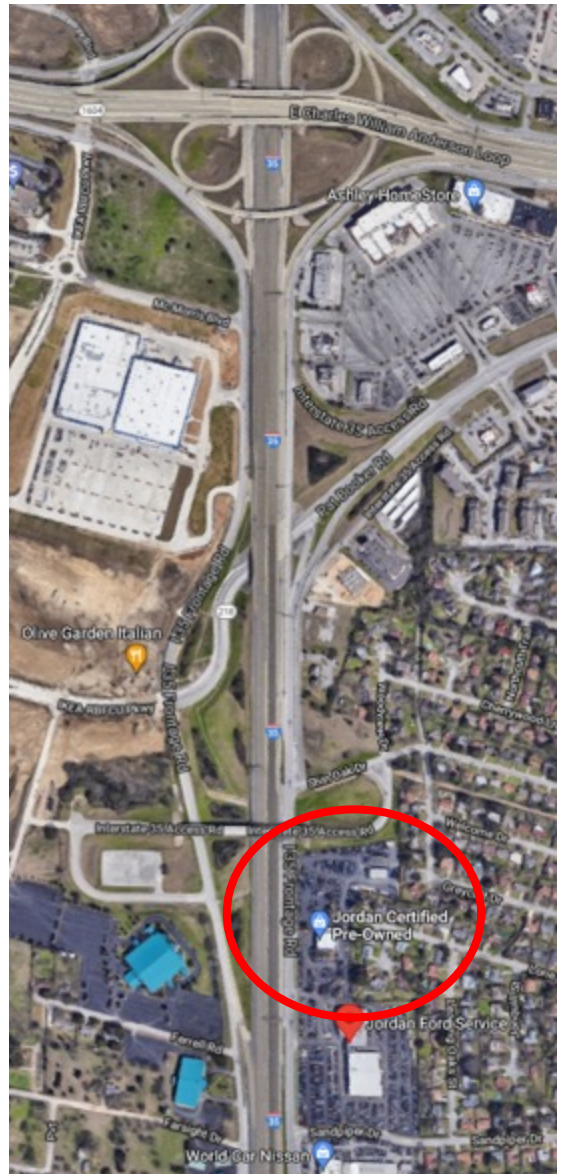
Demonstration: IPMS Judging 101

Model Contest Theme: Open

NOTE: Masks and distancing are optional

At press time, a video conference call setup is considered as an alternative venue for remote/online participants this Thursday evening.

No more meeting streaming over ZOOM... you better come!





LEADERSHIP THOUGHTS

Your Executive Board (E-Board) continues to work on the priority items: safety, learning, and contest. Given the status of the virus in our area and the posture of our host venue, masks will be optional and no longer be mandatory at our meetings. Please continue to monitor the situation with us and mask as you see fit to protect yourself and family. As we are now back to a more normal situation, we will cease to provide a virtual Zoom link to the monthly club meetings. Also, during the virus, we suspended the collection of club dues when we could not meet in person. At the August meeting, your E-Board will bring the recommendation that we reinstitute club dues (\$12/year) beginning in September, our normal dues collection month. These dues are used to pay for the fees related to running the club: IPMS charter, internet services, etc.

Eric has instituted a number of changes to help our meetings feel more relaxed and sociable given our time constraints. One of these changes will be a specific table for new kits that you would like to show off. If you bring a kit, please stand near it during the break to answer questions folks may have.

We received some very good news this month regarding our contest venue. We will now be able to have the entire New Braunfels Civic Convention Center to ourselves for ModelFiesta 40 on January 8, 2022. While still not as much space as we had at the former venue, this space should be more than adequate and will comfortably handle our large show. Len Pilhofer has updated our Alamo Squadron and ModelFiesta web pages, so please take a look.

Several of our members will be traveling to Las Vegas this month for the IPMS National Convention. We wish them safe travels and good success in the contest.

I hope you can join us in person for our next meeting on Thursday, August 5 at 6:30 p.m. Rob Booth will give a presentation regarding the IPMS judging rules and how they are applied. So, please come with questions for the discussion. Our monthly contest theme this month is "Open," so any subject is fair game.

See you soon,
Dana Mathes

Internal Contest Models



1st Place - P-51C -
Olive Drab with
Invasion Stripes
By Rob Booth

2nd Place - Corsair
Egg Plane by Herb
Scranton



3rd - P-51D Aluminum
Finish by John Kress



Some Thoughts on Model Contests and Judging

by Rob Booth



I've been listening to a lot of scale modeling podcasts lately, and it's obvious there is no shortage of folks out there who are passionate about our hobby. Excellent discussions about all aspects of scale modeling are available every few days for us to download, and I have really enjoyed listening to them as I grind through my daily exercise walk. One of the subjects I wish some of these on-line discussion groups would delve into is why it seems so difficult to motivate our fellow modelers to participate in local modeling events, and judging the contest segment, in particular.

After many months of COVID-19 postponement, planning meetings with event staff and our e-board for our 40th Anniversary Edition of ModelFiesta will resume in a couple of weeks. And with them, that nervous feeling in the pit of my gut is already starting. I am serving as the Chief Judge again for next year's Alamo Squadron ModelFiesta 40 contest. I have served in this role for several previous ModelFiesta contests. Except for the first time, I have always enjoyed the effort.

When I reluctantly accepted the position after much prodding from Lee Forbes many years ago, I felt distinctly undeserving to assume such a position. After all, I had only been modeling "seriously" for a few years, and my skills certainly did not measure up to the models that would be shown at the contest. I had only a couple of years of experience learning the process of judging at local shows for a couple of years, too. I remember feeling nervous, embarrassed and overwhelmed by that first effort. I didn't plan well (if at all, really), and was literally begging folks to volunteer to judge the day of the show. It wasn't pretty, but we got through it somehow, and I learned much from the experience.

My biggest take-away from that day was that like most successful events, model shows/contests don't just happen on their own. They are planned, organized and executed by a (usually) small group of dedicated individuals. What I have learned over several years is that those individuals are hard to find, but they are also even harder to replace when their time is done!

I should return the favor to my fellow contestants by participating in the judging of their works



I, like the rest of our ModelFiesta teams over the years, have learned from our mistakes and tried not to repeat them too often. We have developed a “how-to” manual of sorts which has helped with transitioning leadership of our event from one year to the next.

While Alamo Squadron has always organized and held a pretty successful model show/contest in our nearly 40 years of doing so, in the past several years the scope of our local show has improved dramatically. In the last few years prior to the COVID-19 pandemic, we reached highs of over 800 entries by contestants from all over the South Central US, and our fellow modelers from South of the Border. The vast majority of those models were high-quality builds that would compete well even at the National level. We have been able to attract a large contingent of successful vendors that comment that they usually do very well at our show. Our general public admissions have steadily grown over the years, adding to our membership as interest grows. We’ve had our growing pains, to be sure, but IMHO, we’ve turned into a pretty good group to be a part of.

With all of the successful editions of ModelFiesta that I have been a part of, the one thing that has always proven difficult to me when I’ve served as the Head Contest Judge, is the ability to attract a sufficient number of qualified judges to complete that process within the short time we have to do so. I still don’t understand the reluctance of so many of our modeling brethren to participate in the judging process. Maybe it’s just me, but I’ve come to expect that, if I’ve spent hours and hours building a model and enter it in a contest to be judged on how well I’ve done, I should return the favor to my fellow contestants by participating in the judging of their works. Those who know me, know I do so at other club events around IPMS Region 6 when asked.

As a chief contest judge, I have heard and understand the many reasons why excellent modelers decline my invitation to participate in the judging of even just one category at our local contest. Most have to do with the limited time available to visit with friends from far away that they only get to see at shows over lunch while the judging is going on.

make a
commitment
to participate
in the judging
of just one
category at
the next
modeling
event you
attend



Still more invitations are declined by modelers new to the hobby that don't think their skills are up to the challenge. The excuses sometimes seem as endless as the number of requests I've extended. I am thankful for the relatively small group of folks that I have come to depend on to carry the load show after show.

Ultimately what I'm getting to here, is to prompt some thought within the hobby about giving our fellow competitors the respect they deserve from us. After investing the hours, days, weeks, months and sometimes years of time building your masterpieces, isn't it an injustice that they have to be evaluated by a few volunteers that are overburdened within the task, and don't have enough time to give each entry a thorough evaluation? What's even worse, is that competitors come away from a show with no idea why their models didn't place, and others did. There's barely enough time to judge, let alone record the pluses and minuses used to evaluate a given entry for feedback. Why is that? We should show more respect for our fellow competitors by doing better. How?, you might ask.

First, if you've entered a model and you're physically able, make a commitment to participate in the judging of just one category at the next modeling event you attend. I mean this in the most respectful terms, quit being lazy and get off your butt! Frankly, it's arrogant and disrespectful to your modeling brethren not to pitch in and help. By having each competitor at our show participate in judging just one category, we could cut our judging time by half. AND ... provide feedback for competitors. "How?" you might ask again.

We typically recruit teams of three judges. Each category team is issued a judging results log form to complete their task. On the backside of each tab sheet, we provide space to record notes on the attributes and faults of each entry. One team member is encouraged to act as a scribe while the other two judges observe and comment on their evaluations of each model. When evaluations of each model are completed, the team reviews the notes and begins ranking the placement of each entry, after culling those that are not competitive within the category that day.

you make
yourself a better
modeler by
participating in
the judging
process



While some judging teams are reluctant to take the time to record their observations, we have found that the teams who do so are significantly more time efficient in the process than those who don't. The additional benefit is that the head class judges are then able to provide at least some feedback to those competitors who ask what the judges saw while evaluating their entries.

Lastly, and perhaps the best reason to do so, you make yourself a better modeler by participating in the judging process.

This is especially true for modelers who are new to the hobby, or less experienced modelers. Every time I have judged a group of models, I have taken away something that has improved my modeling skills. Whether it's discovering a new finishing technique, an idea for a simple base, what the correct gear alignment of an Fw-190 should be, or something learned within the discussions about why one model is better or not as well done as another entry, I always learn something new to help me be a better modeler.

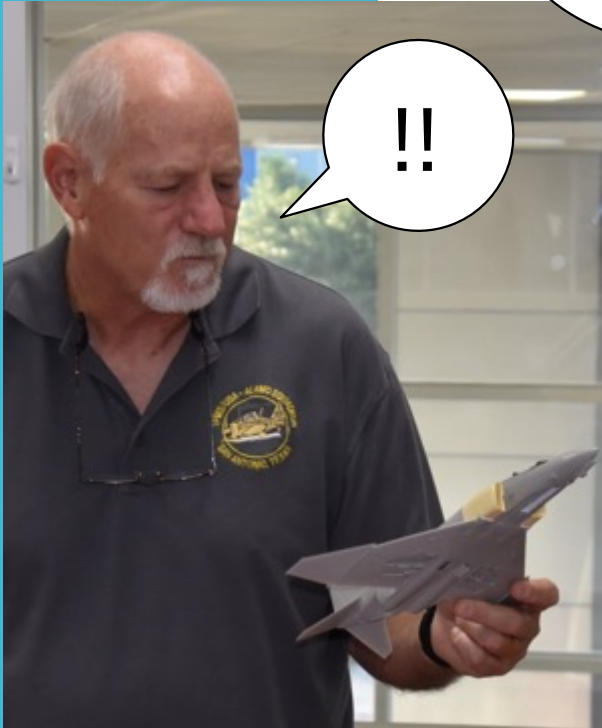
There are hundreds of topics within the subject of judging scale models that promote a spirited discussion. Like "Why haven't we subdivided the Out-of-Box category into legacy and multi-media kits?", but I digress. My point is, discussion without action is just that. And action always speaks louder than words. If you're physically able to do so, please participate in judging at your next local modeling event. It's a win-win for all of us.

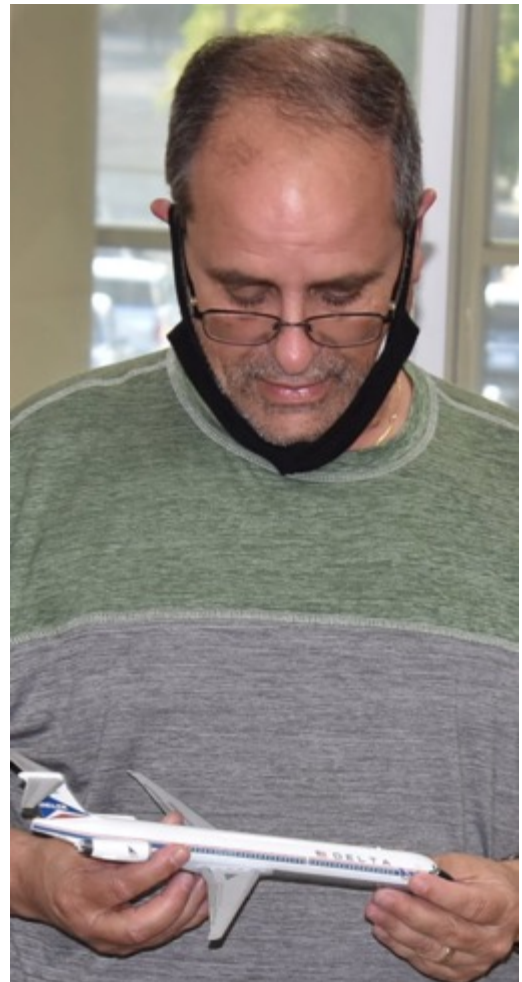
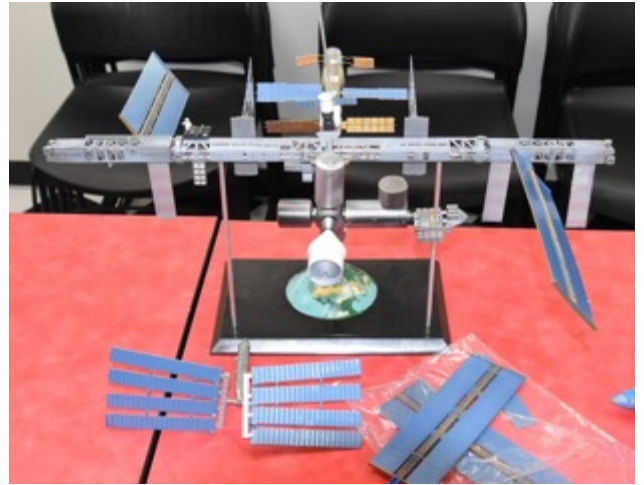
If you've read this far, you probably know by now that I am a candidate for Secretary in this year's IPMS-USA E-board elections. I am running for office in partnership with Len Pilhofer (President) and John Bonanni (2nd VP), with the hope we can earn your vote. We have some great ideas on how to improve the IPMS Convention experience, the IPMS membership experience as a whole, and the scale modeling hobby in general, for all of us who participate. We would appreciate your vote, and will act on the confidence you place in us.

Show and Tell

Mine is bigger
than yours,
Rob!

!!





Member's Showcase

The following club members attended the HAMS show on 24 Jul 21;
**Rob Booth, Jerry Escobedo, Mike Hintz, John Kress, Dana Mathes, Keith Rule
and Herb Scranton III.**

The following awards were awarded in the following categories



401 Junior
Addison Neil (Dana's Granddaughter) 1st, 1957 Chevy Belaire

403 Box Stock
Mike Hintz, 1st Porsche Carrera
404 Street Rod

Keith Rule, 2nd 32 Ford
405 Street Machine

Keith Rule, 2nd 66 Pontiac GTO
406 Factory/Showroom Stock

Rob Booth, 3rd 50th Anniversary Shelby 427 Cobra
420 Foreign & Exotic

Mike Hintz, 1st LA Ferrari
430 Heavy Truck

Keith Rule, 3rd Ford LTL9000 Tow truck
431 Light Truck

Dana Mathes, 1st Grandpa's Pickup
Keith Rule, 2nd 56 Foose F-100

450 Curbside
Rob Booth, 1st Jaguar XKE

470 Slammer
Dana Mathes, 2nd Kansas Farm Truck

Best interior
Mike Hintz, Porsche Carrera
Theme Award

Cheers

Herb Scranton III



Mr. Keith Rule



Mr. Dana Mathes



Mr. Rob Booth



Mr. Mike Hintz



IPMS Voting is *STILL* Open



Click on the IPMS logo to vote!

For members of IPMS/USA:

Voting for the IPMS E-Board is now open. Don't worry, you have plenty of time. Voting terminates on the last day of August.

The first order of business is to find your IPMS membership card and to check the expiration date for your membership. Make sure it is valid through August 2021. If you don't know either of these data points, I can help you to recover that information. You can view the "Candidate's Biographies" here:

<https://voting.ipmsusa3.org/page/2021-candidate-biographies>.

You can cast an electronic ballot here: <https://voting.ipmsusa3.org/content/voting>

Traditionally, the next IPMS Journal to reach your mailbox should contain a paper ballot which can be mailed in. A third path to casting a ballot is available to those who are attending the

upcoming IPMS National Convention in Las Vegas. There will be an opportunity to cast a paper ballot while you are at the convention.

For **Alamo Squadron** members, there are two candidates who will be familiar to you. **Len Pilhofer** is standing for the Presidency, and **Rob Booth** is standing for the position of IPMS Secretary.

Len and Rob are supporting John Bonnani for the position of 2nd Vice President. So what we have here are the Three Musketeers!

As the Alamo Squadron Chapter Contact, and as a former IPMS Officer, (3 offices actually) I have some familiarity with the offices and the responsibilities placed on those who hold office. If you have questions of this nature, please feel free to ask me.

Please, PLEASE, PLEASE be sure to cast a ballot well before the voting deadline!

Dick Montgomery
Alamo Squadron
Chapter Contact



President Len Pilhofer



While I am a recent member of the society, I am a life-long modeler with memories of gluing plastic together when I was as young as 6 years old. The biggest frustration as a young modeler was not having the resources to learn how to improve my techniques. Beyond just experimenting with what I had on-hand to improve my modeling, there was nowhere to turn. After a twenty-plus year career in the U.S. Air Force I settled down, quickly got back into scale modeling, and discovered IPMS/USA. When I attended a local show and a few of the chapter's meetings I quickly realized what a fantastic resource this is for expanding my skills. I have a passion for learning new styles and techniques to improve my modelling as well as passing on what I have learned to others; be they seasoned experts or a beginning modeler. It is this desire that interested me in joining IPMS/USA as I see the society as a large classroom where modelers can learn from each other. This vision is motivating me to run for the office of President of this great society.

If elected, I will approach the office of President with a view of how to improve the learning environment of local meetings, shows, and the national convention. I want to ensure that when a member leaves an IPMS event they say to themselves that it was worth attending because they learned something new in the hobby. What can the national IPMS/USA organization do to help local clubs promote this learning environment? In addition, what can the organization do to improve the annual national convention to promote learning in scale modeling? I wish to pose these questions to the national executive board should I be elected as well as pose these questions to the membership at large. The executive board will take these recommendations, see what is feasible, and execute.

In addition to fostering a better learning environment my experience as a national convention chairman left me with many ideas of improving the process from bidding to planning and executing. There are many aspects of the national convention that can be streamlined and taken on by the national executive board. This will decrease the burden on local clubs and in-turn, hopefully increase the number of clubs willing to step forward to host a convention. There are many parts of the country that have not seen a convention in many years and some that have never hosted one at all. I, along with other members of the executive board, will take a deep look at what can be improved in this regard. Thank you for your time and I humbly ask for your support in the upcoming IPMS/USA national elections.



Secretary Rob Booth



My name is Rob Booth. I recently retired as a Director of Preconstruction Services, capping a long career as a Project Manager and Estimator in the commercial construction industry. Like the process of building a scale model from a kit, my day job consisted of producing a unique, high-quality finished product from many differing components according to a set of illustrated instructions that were not always sufficient for that purpose. A key to success in those efforts was the ability to clearly communicate and document the process, like what is required of the IPMS/USA Secretary. I have been an IPMS/USA member since 1994 when I joined Alamo Squadron, the San Antonio chapter. I remain an active chapter member and served as the chapter President in past years. My certification as a Qualified Nationals Judge was earned in 2013. I was nominated by Alamo Squadron for consideration as the first IPMS/USA Member of the Year in 2019, for which I am very humbly proud. I was awarded that distinction at the 2019 Convention in Chattanooga. I'm also a founding member and currently the President of IPMS-Tex Hill – the Texas Hill Country Scale Modelers. I actively participated in the preparation of two bid proposals to host the IPMS/USA National Convention, including the postponed 2020 "Come and Make It" Texas Nats, now re-scheduled for 2023. I serve as the Awards Coordinator and the Decal Coordinator and serve as a "behind the scenes Co-Chair" to assist Convention Chairman Len Pilhofer whenever and wherever necessary to pull off that event. I, and others from that team decided to step up and campaign for positions on the IPMS-US E-board to try to improve the Nats Convention bidding and hosting process, and contribute to the betterment of the Society. I believe the Secretary has an important role to play in assembling and documenting that information with the rest of the E-Board to ensure continued success and improvement. Thank you for your consideration. I will act on and appreciate the confidence of your vote.



Adhesives

102

By DeLaun Fifield

NOTE: These are a couple articles that my friend DeLaun Fifield wrote for a show back in 2016 in FL. I'd like to submit them for our newsletter, with a credit for submission, but with him getting the credit for the work.
- Jonathon Griffith

Many times I have seen it asked "What "glue" is best" or "What glue is best to glue xyz to xyz" So I thought I would explain what I use on my models. Understand that I build my models to survive the rigors of going to shows, as well as to

stand out when being judged. Proper use of these glues means that the glues remain un-detectable under the scrutiny of being judged. So there really is a "right glue" for the "right moment". Or better stated-Best glue for the "job".

You will see in this pic FOUR different types of glues that should handle 99% of your needs as you build. I will start with the Plastruct glue: Its ONLY for unpainted surfaces. I use it on roll cages, unpainted plastic filling (like using plastic rod instead of putty for filling gaps and seams) etc. Anywhere you can do bare plastic to bare plastic. It literally "welds" the two surfaces together and dries fast and incredibly

strong. I would NOT recommend it for painted surfaces because the "welding" effect of the glue is greatly diminished.

When I use superglue I ALWAYS use super glue GEL.

Because its a gel its a LOT more controllable as to where the glue winds up. Its not real strong because it does eventually dries brittle. I use it anywhere strength is not re-quired- engine halves, tranny halves, unpainted seat halves. Only use drops of it-less is best! It can be sanded once dry to fill in seams. DO NOT use it anywhere near clear glass as it can leave a NASTY haze on the surface. Do not use it near chrome either as it will do the same thing! Do not use it on suspensions as they will eventually break off because of the brittle nature of the bond. Same thing for mirrors, small parts etc.





YES! The Future floor wax is a "glue" and a good one to boot when used properly. Meaning its GREAT for clear parts, windows, photo etch, even decals that just wont stick. It dries crystal clear and incredibly strong when used this way. I use it for my photo etch emblems, bolt heads, TINY parts. Its also great for decals that just wont stick or lay down, but be quick and make sure you lay the decal down PERFECTLY- it won't allow you to re-position the decal once you apply it so be careful! You can use it to create clear lens for gauges. Usually about 3 or 4 coatings of it will fill the round gauge. Only use the furniture polish with Future in it! It will say "Future Floor Shine" on the label-look for the logo.

Lastly the glue I use MOST often: 5-minute epoxy. I use it easily 80% of the time when I am gluing parts together because of its strength. You mix equal parts of it then apply. You have 5 minutes of "hold time" or 5 minutes to get the part properly aligned. Once dry its incredibly strong and two men and a small child could not break the part off IF you properly mixed it. Use as little as needed as you don't want to create a glue mark. Its awesome for suspensions, windows, gluing major components together (examples: interior walls, the body to the chassis, wheels to suspensions, suspensions to the chassis, painted roll cage to the chassis, etc.) This is why my models can survive show after show after show, or even being dropped. I don't have wheels falling off and my models stay together YEARS after being built! You can also use it to fill in lens on the dash as well, although I prefer the floor polish for this.

Please note, that there are other great glues out there for other purposes. You can use watch glue for clear parts and photo-etch as well. BUT notice I did NOT list Testors glue, or other "Hobby Glues". They are made to be used primarily by kids. Which means no harsh chemicals or catalysts which are EXACTLY what creates the bonding you want for your models. So, if you are serious about your model building- then get serious about your glues and stay away from Testors and such.

I hope all of this helps! Enjoy and thanks for reading.

Club's E-Board 2021-2022

Information

IPMS/USA Alamo Squadron: The Club was founded in 1977 in San Antonio, Texas, for the enjoyment of building scale models and the camaraderie of the members.

The Alamo Squadron has been putting on ModelFiesta since 1981. Locations have included the Wonderland Mall, a Holiday Inn, the Seven Oaks Motel & Convention Center, the Live Oak Civic Center and the new location since 2013, the San Antonio Event Center.



President:
Dana Mathes
huskercat@gmail.com



Vice-President:
Eric Syverson
esyver@zoho.com



Treasurer:
Christopher Settle
csettle99x@yahoo.com



Photos by:
Dick Montgomery

ARTICLES!! ARTICLES!!

We need your writing skills for the newsletter!

All submission must be turned in by the 20th of the month prior to next month's meeting. Please, send your input to Jerry Escobedo:
paperjerry3@gmail.com

Upcoming Events

IPMS Region 6 Events

All-new hyperlinks! Click them all!

Start Date	<u>Name</u>	Location
Saturday, September 11, 2021	<u>Fort Worth Super Con 2021</u>	Arlington, Texas
Saturday, September 18, 2021	<u>2021 AMPS Centex Armor Expo</u>	Georgetown, Texas
Saturday, September 25, 2021	<u>21st Annual Sproo-Doo "Across the Sea and Stars"</u>	Jacksonville, Arkansas
Saturday, October 2, 2021	<u>2021 Capitol Classic</u>	Austin, Texas
Saturday, October 9, 2021	<u>Cajun Modelfest 34</u>	Baton Rouge, Louisiana
Saturday, January 8, 2022	<u>Alamo Squadron Model Fiesta 40</u>	New Braunfels, Texas



**August 18 - 21, 2021
In the Fabulous City of
LAS VEGAS**



IPMS/USA MEMBERSHIP FORM

IPMS No.: _____ Name: _____
Address: _____ If Renewing _____ First _____ Middle _____ Last _____
City: _____ State: _____ Zip: _____
Phone: _____ E-mail: _____
Signature (required by P.O.) _____

Type of Membership ☐ Adult, 1 Year: \$30 ☐ Adult, 2 Years: \$58 ☐ Adult, 3 Years: \$86
☐ Junior (Under 18 Years) \$17 ☐ Family, 1 Year: \$35 (Adult + \$5, One Set Journals) How Many Cards? _____
☐ Canada & Mexico: \$35 ☐ Other / Foreign: \$38 (Surface) Checks must be drawn on a US bank or international money order
Payment Method: ☐ Check ☐ Money Order

Chapter Affiliation, (if any): _____

If Recommended by an IPMS Member, Please List His / Her Name and Member Number:

Name: _____ IPMS No.: _____

IPMS/USA

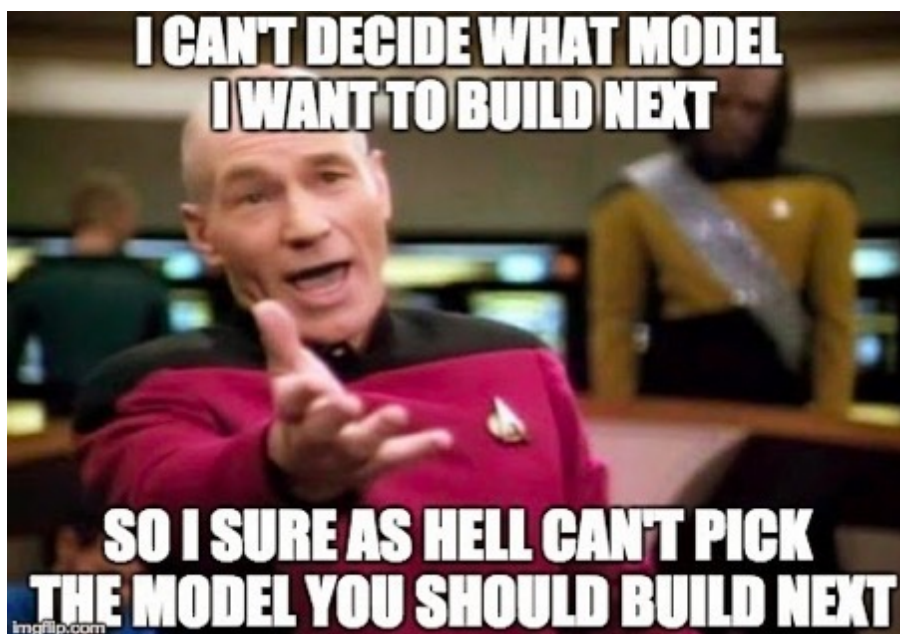
Join or Renew Online at: www.ipmsusa.org

PO Box 1411

Riverview, FL 33568-1411

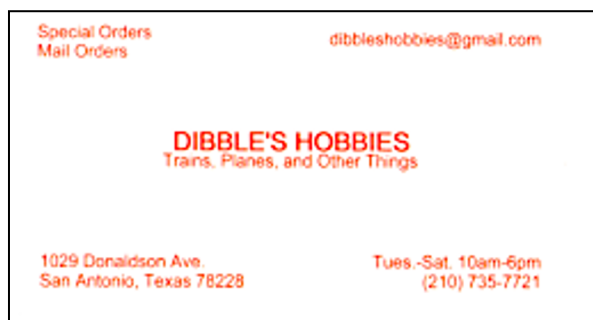
The Alamo Squadron Newsletter is published monthly by IPMS/USA Alamo Squadron of San Antonio, for the information and enjoyment of the members of the Alamo Squadron and its friends around the world. Articles, reviews, news items, ads to buy, sell or trade, and other contributions are very welcome.

Send text file, photos and web sites to
Jerry Escobedo:
paperjerry3@gmail.com



Support your Local Hobby Shops!

For models, paints, books, decals, tools and more!



dibbleshobbies.com



hillcountryhobby.com



lionhearthobby.com



<https://www.facebook.com/collectmoretoys>